

Inductively Coupled Plasma Systems — ICP
Quartz Chambers - “Ultra-Clean”, particulate free operation
RF Power at 13.56-MHz - Touch-Panel PLC Controls

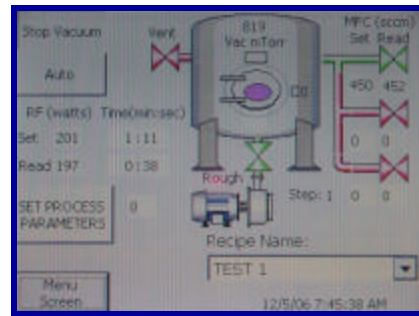


Chamber Sizes:
4-Inch to 15-Inch Diameter
Single or Multiple Chambers
Optional: Rails, Racks and Boats



Laminar Gas Flow ensures uniform
Multi-directional plasma.
Molecular level Cleaning,
Surface Modification, Etching,
Biological Ashing, Photo-mask De-Scum
Effluent Free

Aluminum Reactor Plasma Systems
Planar Parallel Plate - Laminar Gas Flow
RF Power at 13.56-MHz - Touch-Panel PLC Controls



Adjustable Shelves - no tools
Multiple Process PLC Control
Mass Flow Controls for process gas

Available chamber sizes: Inches
14x14, 18x18, 24x24 and 30x30

ANATECH USA
2947 Whipple Road
Union City, CA 94587 USA
www.anatechusa.com
Tel: 510-401-5990
Fax: 510-401-5994