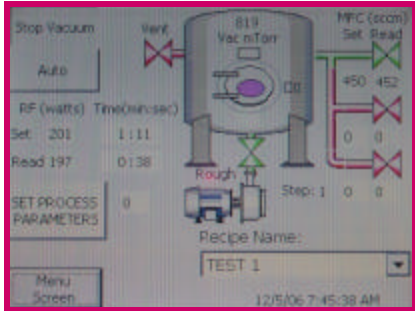
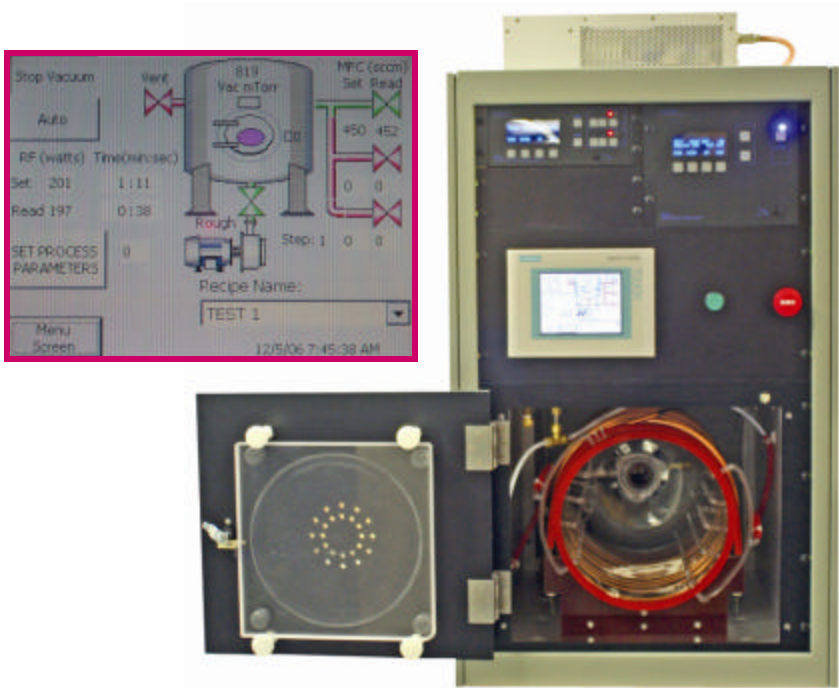
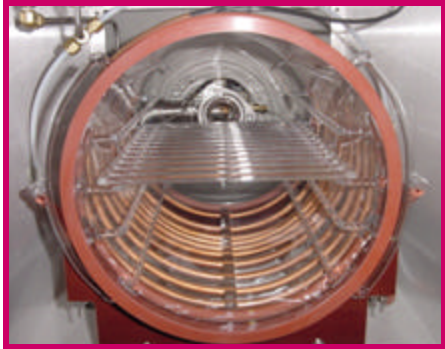


## SCE-110 Plasma System



Inductively Coupled Plasma ICP



Siemens S7-200 Series "Touch Panel" Control  
Graphic Operational Display - Pass Word Protected

### Inductive Coupling

**Optional:** Quartz Rails and Quartz Rack

Ensures multi-directional cleaning or surface modification unmatched by box type systems.

**"Ultra Clean" Quartz Chamber**  
There are no metal parts inside this chamber, your parts aren't exposed to the particulates associated with metal chambers.

**Immersing parts in low temperature plasma may be your final cleaning solution !!**  
Anatech's plasma systems are CFC and effluent free, operator and environmentally safe, easily operated.

# SCE-110 Barrel Plasma System

## Control System:

Siemens S7-200  
Programmable Logic Controller LCD Display:

Pressure display  
Gas flow with mass flow controllers (2)  
Single gas input  
Process time remaining

## Power Requirements:

115 VAC 15A 50/60 HZ

## Options:

220 VAC

## Control System:

### Options:

3rd Gas channel  
Data logging  
Capacitance manometer  
Temperature sensor  
Throttle valve  
Nitrogen backfill  
Slow pump and particle reduction  
Operational Light Array

## Dimensions:

System comes in a standard 19 inch half rack  
36 inch high x 23 inch wide x 27 inch deep  
250 lbs Crated weight (estimated)

## Reactor Chamber:

Quartz chamber 10" Diameter x 18" Long  
Front Loading  
Viewport on front door with UV shield

### Options:

Quartz rails & shelves (up to 3)  
Planar electrode

## Vacuum System:

23 CFM Standard  
Main Vacuum Valve system controlled  
6 feet of 1.500 " ID Vacuum line  
Oxygen Service, Class "B" Preparation

## RF Power Source:

0-600 Watt, 13.56 MHz  
Forward and reflected power reading  
Automatic Matching Network

### Options:

1000 Watt 13.56 MHz supply

## Vacuum System:

### Options:

Corrosive service  
Mist eliminator  
Oil filtration

**CALL ANATECH USA TO DISCUSS YOUR APPLICATION**

2947 Whipple Road  
Union City, CA 94587

Toll Free: **800-390-4449** Tel: **510-401-5990** Fax: **510-401-5994**