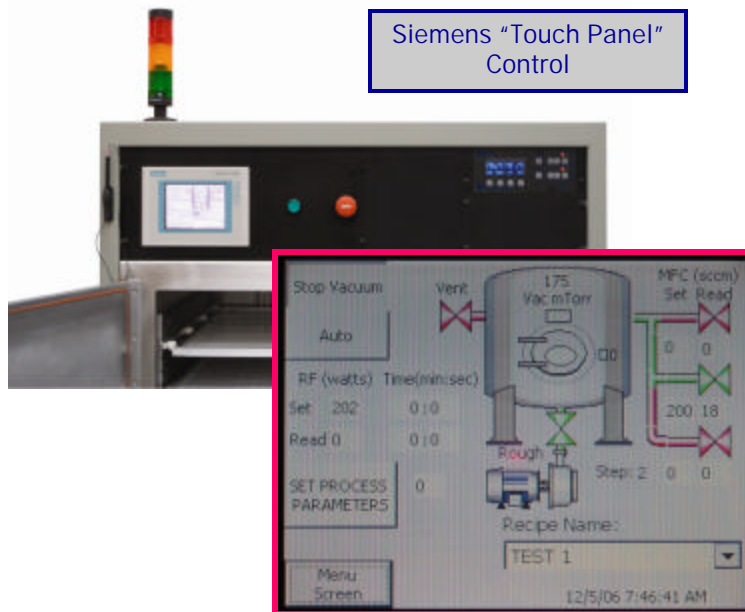


30" Aluminum Reactor Plasma System



Vacuum and Process Control Functions are clearly visible on one easy to read display



Applications: Aerospace, Bio-Medical and Electronics

Plasma treatment cleans parts to increase surface energy, which produces higher bond strengths, fewer adherence voids and better continuity.

Plasma can be used on a variety of materials: biomaterials, ceramics, composites, metals, plastics and polymers.

Anatech USA's line of plasma systems offer either dedicated single function or come in a PLC controlled "Touch-Panel" model with 10 or more recipes on board.

30" Aluminum Reactor Plasma System

Control System:

Siemens S7 Programmable Logic Controller

LCD Display:

- "Touch-Panel" display screen
- Pressure display
- Gas flow with mass flow controller
- Single gas input
- Process time remaining
- Emergency Off (EMO)

Control System Options:

- 3 Gas channels
- PLC control
- Data logging
- Capacitance manometer—corrosive use
- Temperature sensor
- Throttle valve
- Nitrogen backfill
- Slow pump and particle reduction
- Photo end point for photoresist stripping

Reactor Chamber 30" Aluminum:

- Shelves can be configured for primary or downstream plasma
- 30" Cube aluminum chamber
- Multiple shelves— (8)
- Front loading
- View port on front door RF and UV shielded

RF Power Source:

- 0-1000 Watt, 13.56 MHz
- Forward and reflected power reading
- 3% Power regulation
- Fully protected circuitry

Optional:

- Low frequency
- Coolant Chiller

Power Requirements:

220VAC Standard
208/220 3P 30A Vacuum Pump

Dimensions:

Standard 30" equipment rack
36" W x 60" H x 36" D
Pump dimensions
30" L x 12" W x 18" H
Shipping weight
1500 lbs Crated weight (estimated)

Vacuum System:

85 CFM Standard service with all manifold interconnects

Vacuum System Options:

- Dry Pumps
- Oxygen service
- Corrosive service
- Mist filter—exhaust
- Oil filtration—Fomblin
- Larger pumps required for some applications



CALL ANATECH USA TODAY TO DISCUSS YOUR APPLICATION

1-800-390-4449

2947 Whipple Road, Union City, CA 94587