

Thin Film Deposition Systems
 SEM Preparation
 Noble Metals Deposition
Laboratory Table-Top models
Carbon Coating Accessories for X-Ray Analysis

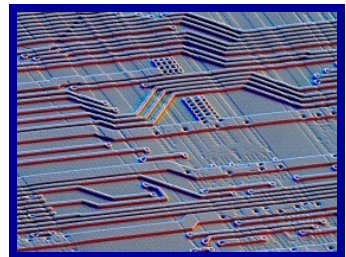


Hummer 6.2 + CEA and 6.6 - CEA compatible

Mosquito Larva Hairs



68040 Computer Chip



Hummer 8.0 with 3-Targets
 3 Power Supplies



CEA
 carbon evaporation accessory



CDS-2.2
 carbon deposition system

Thin Film Deposition Systems

Sputter Down or Sputter Up E-Beam and Thermal Evaporation

R&D, Pilot Production Box Chamber Systems



6.6 Turbo RF

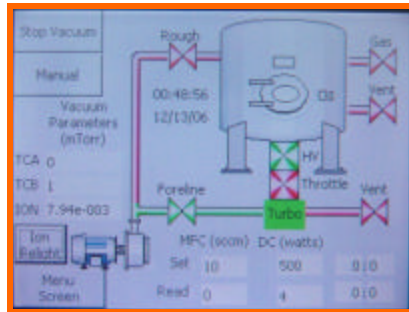


8.3 DC/RF

Hummer Turbo DC and RF models



BC-20 DC/RF



Touch-Panel PLC Control



Linear Planar Sources



E-Beam Evaporation Thermal Resistance

16x16, 20x20, 24x24, and 30x30 - Inch Chamber Models

2947 Whipple Road, Union City, CA 94587 USA. Tel: 510-401-5990 Fax; 510-401-5994